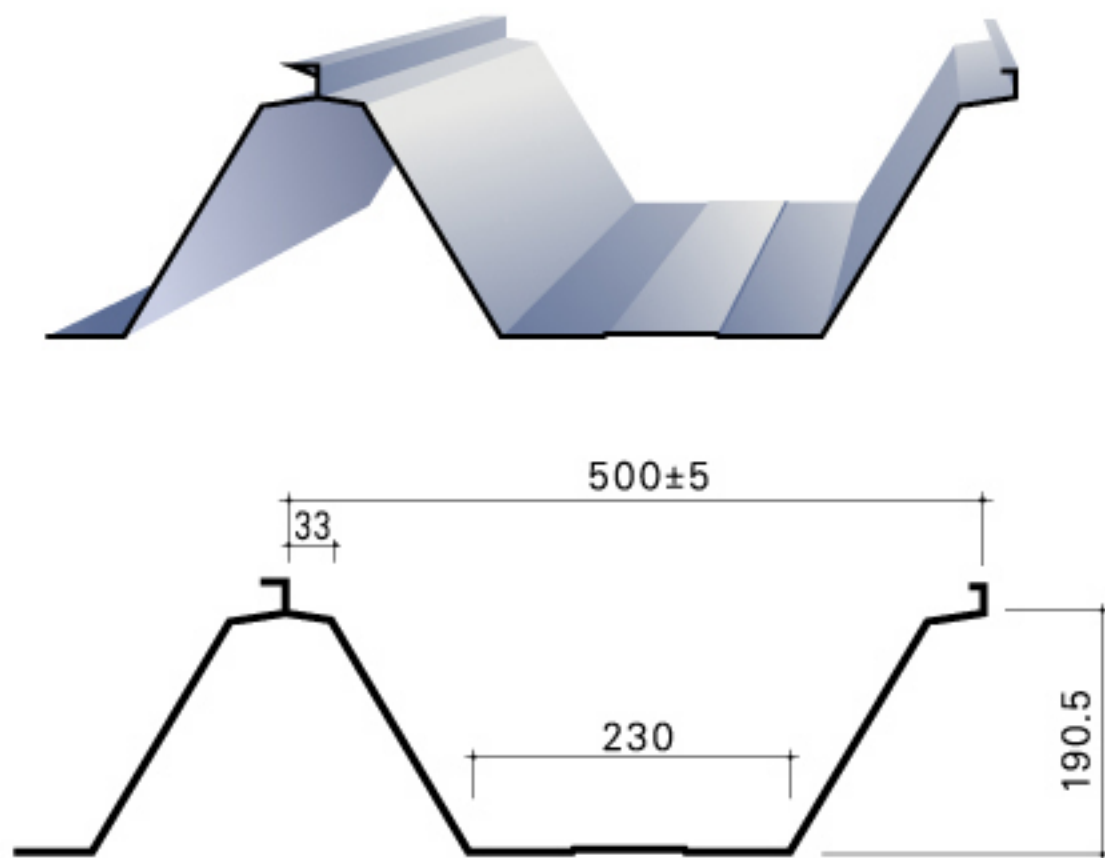


SL500 深V槽扣合型系統

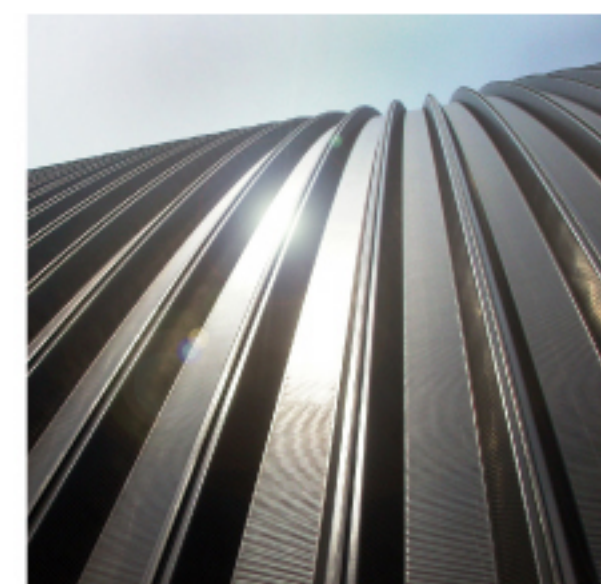
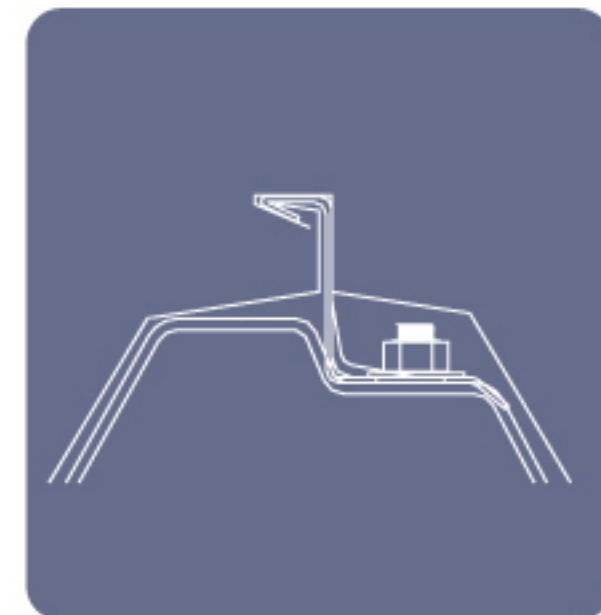


特點

- 無螺栓暴露型/SEAMING TECHNIQUE
- 可與各式隔熱材配合施工
- 斷熱耐火隔熱材舒康ER·GR熱融成型
- 可彎弧加工流水方向不搭接
- 水密、氣密性優

設計

- 豎鋼桁跨距可達4M(不需C型鋼)
- 洩水坡度可達1/100
- 可加掛飾板與光電板
- 自然彎曲 $R \geq 250m$
- 油壓折曲加工 $R \geq 36cm$



基材 BASE METAL / 表面處理 COATING

板厚 t (mm) 0.4 0.5 0.6 0.7 0.8 1.0 1.2

| | | 0.4 | 0.5 | 0.6 | 0.7 | 0.8 | 1.0 | 1.2 |
|------------------|--|-----|-----|-----|-----|-----|-----|-----|
| 不 銹 鋼 板 | 原色不銹鋼板 SUS304/SUS S16 stainless | | | ● | ● | ● | ● | ● |
| | 超耐候不銹鋼板 U22 super stainless | | | ● | ● | ● | ● | ● |
| | 氟碳樹脂彩色不銹鋼板 PVDF color coated stainless | | | ● | ● | ● | ● | ● |
| | 鍍銅不銹鋼板 Copper coated stainless | | | ● | ● | ● | ● | ● |
| 鋼 板 | 耐候鍍鋁鋼板 Weather-Resistant alu. coated | | | | | ● | ● | ● |
| | 聚酯彩鋼板 Polyester color coated | | | | | ● | ● | ● |
| | 矽樹脂改良聚酯彩鋼板 S.M.P. color coated | | | | | ● | ● | ● |
| | 著色玻璃纖維加強聚酯彩色鋼板 Glassfiber Pigmented Polyester color coated | | | | | ● | ● | ● |
| | 氟碳樹脂彩鋼板 PVDF color coated | | | | | ● | ● | ● |
| | 超耐候彩鋼板 Super Weather-Resistant color coated | | | | | ● | ● | ● |